



GMT MONTHLY MEMBERSHIP PROGRESS REPORT

Results as of: 5/31/2018

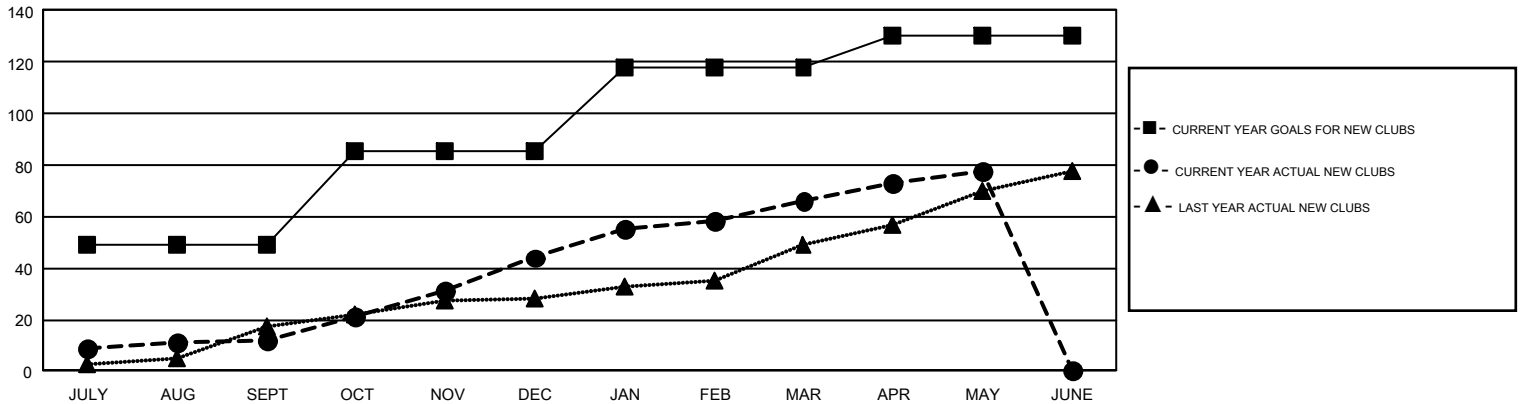
GMT Constitutional Area 6, Group E

GMT: VASUDEV VALAWALKAR

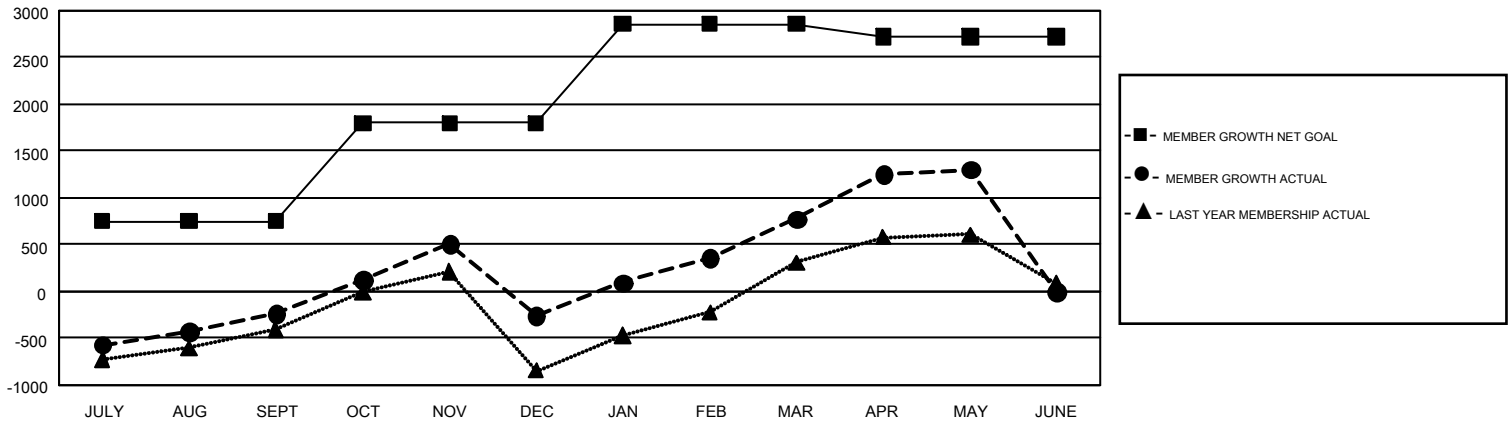
REPORT DOES NOT INCLUDE CLUBS IN UNDISTRICTED AREAS.

Clubs				Members			
RESULTS FOR 2017-2018				RESULTS FOR 2017-2018			
QUARTER	NEW CLUB GOAL	NEW CLUBS	DROPPED CLUBS	QUARTER	MEMBER GROWTH NET GOAL	MEMBER GROWTH ACTUAL	DROPPED MEMBERS ACTUAL (including transfers)
JULY/AUG/SEPT	49	12	2	JULY/AUG/SEPT	750	1,346	1,443
OCT/NOV/DEC	36	32	32	OCT/NOV/DEC	1,050	1,577	1,545
JAN/FEB/MAR	33	22	6	JAN/FEB/MAR	1,060	1,842	516
APR/MAY/JUNE	12	12	1	APR/MAY/JUNE	-140	1,137	478

GOALS AND ACTUAL NEW CLUBS CUMULATIVE



GOALS AND ACTUAL MEMBERS CUMULATIVE



DROPPED CLUBS: 41	754 CLUBS OF 1,086 ADDED 1 OR MORE NEW MEMBERS	GENDER DISTRIBUTION MALE 25,713 (78.26%) FEMALE 7,144 (21.74%)
DROPPED MEMBERS DECEASED 131 CLUB CANCELLED 911 OTHER 2,940 <hr/> TOTAL 3,982	CLICK HERE FOR CUMULATIVE MEMBERSHIP DATA	TOTAL FAMILY UNIT MEMBERS 9,672 FAMILY MEMBERS PAYING HALF DUES 5,135